

## LOWER THUKELA BULK WATER SUPPLY SCHEME

Strategy Steering Committee – Meeting 4, 14 March 2012  
Implementation and Maintenance of the Water Reconciliation Strategy for the  
KZN Metropolitan Areas



### Progress to date

- Environmental Impact Assessment report submitted to the authorities January 2012 and was made available for public comment
- Professional Service Provider appointed for design July 2011
- Design split up into a number of contracts
- Design of gravity pipeline completed in March 2012
- Design of other components on going
- Design of the WTW is 80% complete

### Final Configuration

#### Phase 1

- Weir and abstraction works sized for 120MI/day. Equipped with raw water pumps for 60MI/day
- Desilting canals built for 60MI/day
- WTP designed for 110MI/day output but built for 55MI/day
- Pump station built for 110MI/day but equipped for 55MI/day
- Southern Rising Main Pipeline (can convey 110MI/day)
- Southern Reservoir (sized for 55MI/day, upgradeable)
- Southern Gravity Main 900mm dia. (can convey 110MI/day)

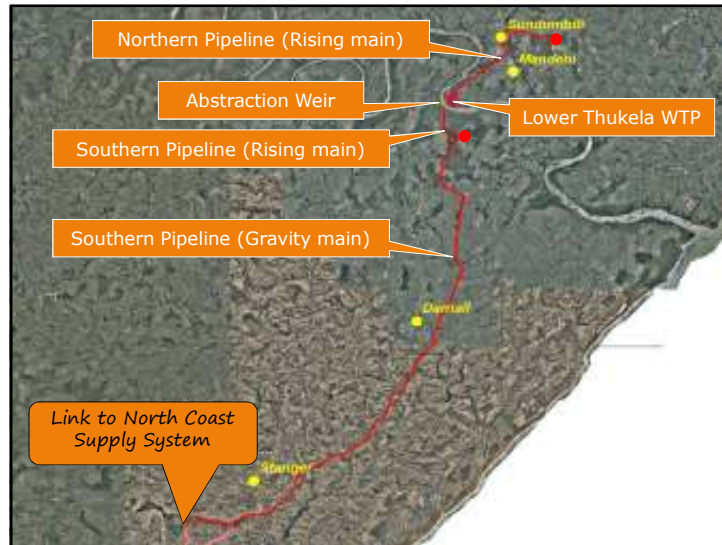


### Final Configuration

#### Further Phase Options

- Upgrade raw water pumps to 120MI/day
- Upgrade desilting canals to 120MI/day
- Upgrade WTP to 110MI/day output
- Install DAF units (if required)
- Construct desilting dam (if required)
- Upgrade pump station to 110MI/day
- Upgrade Southern Reservoir to 110MI/day
- Northern Rising Main Pipeline (55MI/day or 110MI/day)
- Northern Reservoir (55MI/day or 110MI/day)





## Way forward

- Environmental Authorisation expected in July 2012
- Need to obtain all necessary DWA licences and approvals before construction and abstractions can commence. Submission March 2012.
- Construction of the gravity pipeline to start in August 2012
- Design of all components approximately 35% complete
- Weir must be constructed over at least two dry seasons
- Target deadlines for final completion:
  - Gravity Pipeline (Mvoti Reservoir to Darnall) – November 2013
  - LTBWSS Phase 1 - December 2014